



GO Dx

Review. Reset. Renew

Company Profile

[1]

Executive Summary

Unique Proposition

- Proprietary diagnosis for early detection of tumor markers
- Patented nutraceuticals for immunity and neural health
- Advanced screening for personalized health-risk profile

Market Potential

- GO-Dx Corp is well positioned to achieve revenue of SGD 51.6 million by FY 2028 with EBITDA SGD 30.8 million (60% of revenue); cash flow positive in FY 2025.

Strengths

- Management and scientific teams with vast experience in healthcare-biotech space
- Collaboration with established licensed diagnostic laboratories

IPO (NSX)

- To raise up between AUD 5 million to 8 million
- Use of IPO Proceeds:
 - Working Capital (AUD 1.49 million)
 - R&D and Clinical Trial (AUD 1.55 million)
 - Development of AI-Enabled tools (AUD 0.6 million)
 - Investment in Pathomic Health (AUD 1.11 million)
 - Market Launch Initiatives (AUD 0.25 million)



Diagnostics Problems

Eliminate the world's problem today

Today's Diagnostics Challenges

Lack of accessibility for calibrated molecular data on neurological and immunological health

Therapeutic treatment of immunological & neurological illnesses are not precise

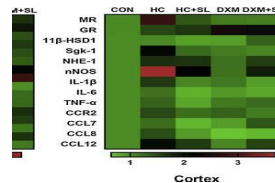
Inadequate comprehension & specific strategies in personalised and precision medicine

Current diagnostics tools for cancer tumours are restricted to reveal only mid-late stages

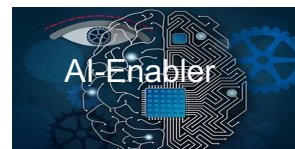
GO-Dx's Solutions



Calibration of specific molecular data via smart nutraceutical triggers for neural and immunity health (Dr Lim's patents and IPs)



Precise RNA mining and mapping & analytics – personalized health-risk profile (Dr Lim's patents and IPs)



AI enabled specific data processing & predictive analytics for next era of precise therapeutics



Smart miRNA-DNA-epigenetic testing & devices for liquid biopsy to confirm cancer at earliest possible time



Global Healthcare Trend

Accessible Health Monitoring

Simple-to-Use diagnostic assay kit to report health across the lifespan focusing on prevention, monitoring, and survivorship

Advanced Techniques in Gene Editing

Technologies for therapeutic gene editing and to strengthen biomanufacturing ecosystem to enable new therapeutics

Precision Multi-Omic Medicine

Develop molecular classifications for diagnosis and/or treatment focusing on enabling diagnosis and monitoring of personal health

AI-Driven Bio-manufacturing

Technologies to increase the speed of cell-based therapies to achieve high viability and targeted delivery focusing on equitable access to next-generation therapy



About GO-Dx Corp

Focus

- Cutting-edge molecular mining/mapping methodologies and innovative diagnostics to facilitate personalised wellness-medicine and early diagnostics capabilities
- Field Specialty – immunity/neural health, anti-ageing, liquid biopsies for tumour markers

Purpose

- Enable prevention; Enhance monitoring; Enrich survivorship

Strive

- Deliver innovative-proprietary technology in rapid mapping diagnostics leveraging on AI-data analytics
- Empower individuals' personalized and effective healthcare solutions
- Enable early diagnosis of cancer markers



Our Value Proposition

Our Offering

- Proprietary bio-active ingredients for boosting immunity and brain health and be used ingeniously as molecular triggers and 'baits' for RNA mining. (Dr Lim's patents and IPs)
- Molecular personalized profiling using proprietary mRNA mapping and analytics (Dr Lim's patents and IPs)
- miRNA diagnostic technology for early detection of cancers
- AI-enabled data mining and analytics

Our Promise

- Rapid Non-Invasive Diagnosis
- Accessible & Affordable Reporting
- Scientific-Validated Technology
- Precise Medicine & Personalized Wellness

Our IP

- 6 patentable IPs (to be covered in at least 15 countries) (Dr Lim's patents and IPs)
- 2 associate IPs (epigenetics)
- At least 2 investee IPs



Our Proprietary IPs

| Intellectual Property | Brief |
|-----------------------|---|
| IP 1 | Mining specific and targeted receptor antibodies or interacting molecules crucial for protecting the cells from infectious agents, such as Covid viruses, deadly influenza viruses, etc. (Patent Specification Stage) |
| IP 2 | Mining specific and targeted receptor antibodies or interacting molecules crucial for directing movement of cells and thereby stimulating immune health. (Patent Specification Stage) |
| IP 3 | Mining specific and targeted receptor antibodies or interacting molecules crucial for immunomodulation and anti-tumor activities. (Patent Specification Stage) |
| IP 4 | Mining specific and targeted receptor antibodies or interacting molecules crucial for neuroprotection and maintaining good brain health as well as that of the autonomic nervous system. (Patent Specification Stage) |
| IP 5 | Mining specific and targeted receptor antibodies or interacting molecules (including inhibitors of CDK, topoisomerases, monoamine oxidase and binding sites at benzodiazepine receptors and 5- hydroxy serotonin receptors), crucial for sedative, anxiolytic, hypnotic, anticonvulsant activities. (Patent Specification Stage) |
| IP 6 | Mining specific and targeted receptor antibodies or interacting molecules crucial for maintaining that vital immunity balance within the body; too strong an immunity may result in autoimmunity and too weak an immunity may cause the body to be easily infected by pathogenic microorganisms, resulting in flu and other infectious diseases. (Patent Filed) |



GO-Dx

Our GMP Laboratory

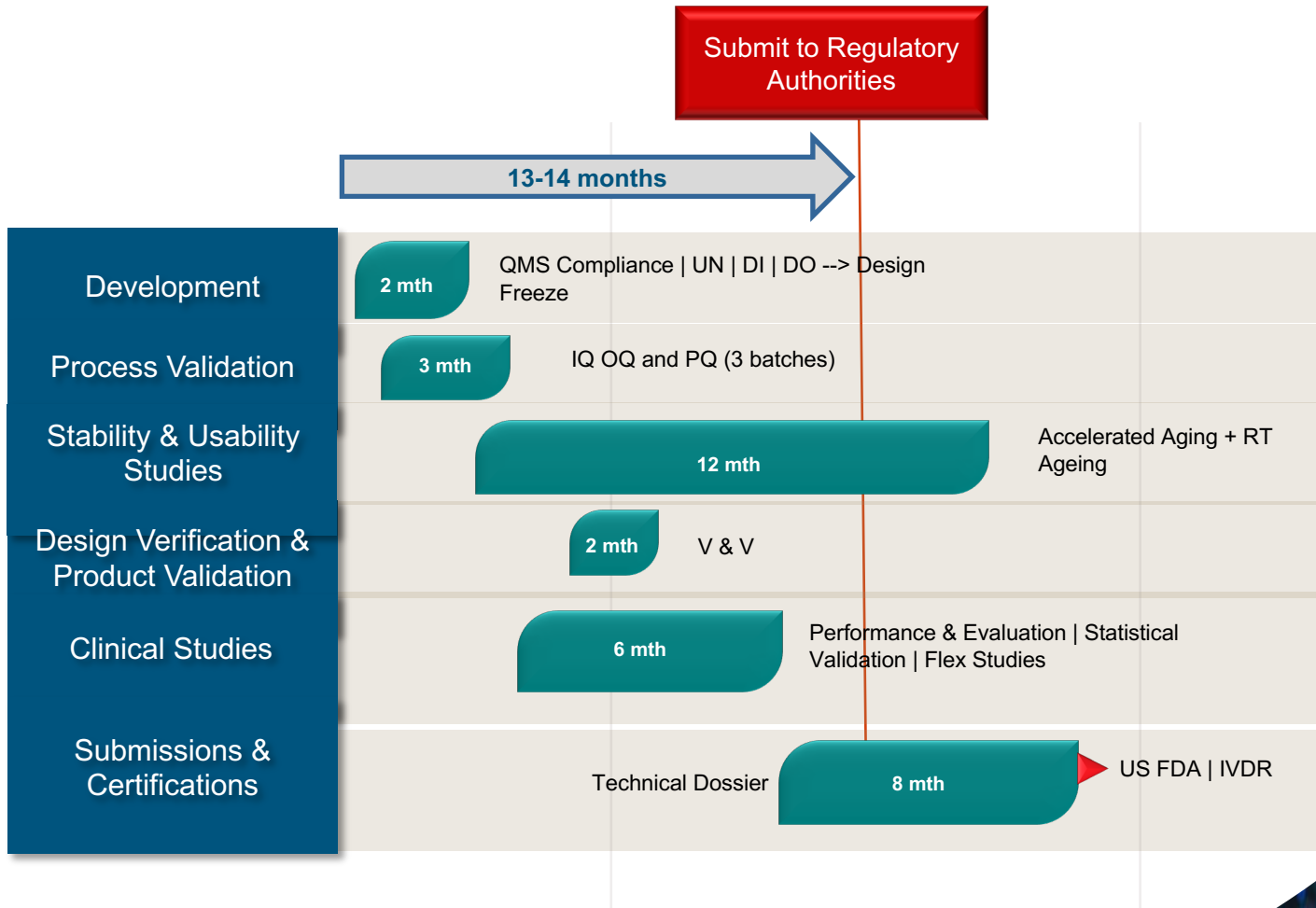
R&D & Diagnostics Lab



Located at 81, Ubi Avenue 4, Unit 05-21, UB One

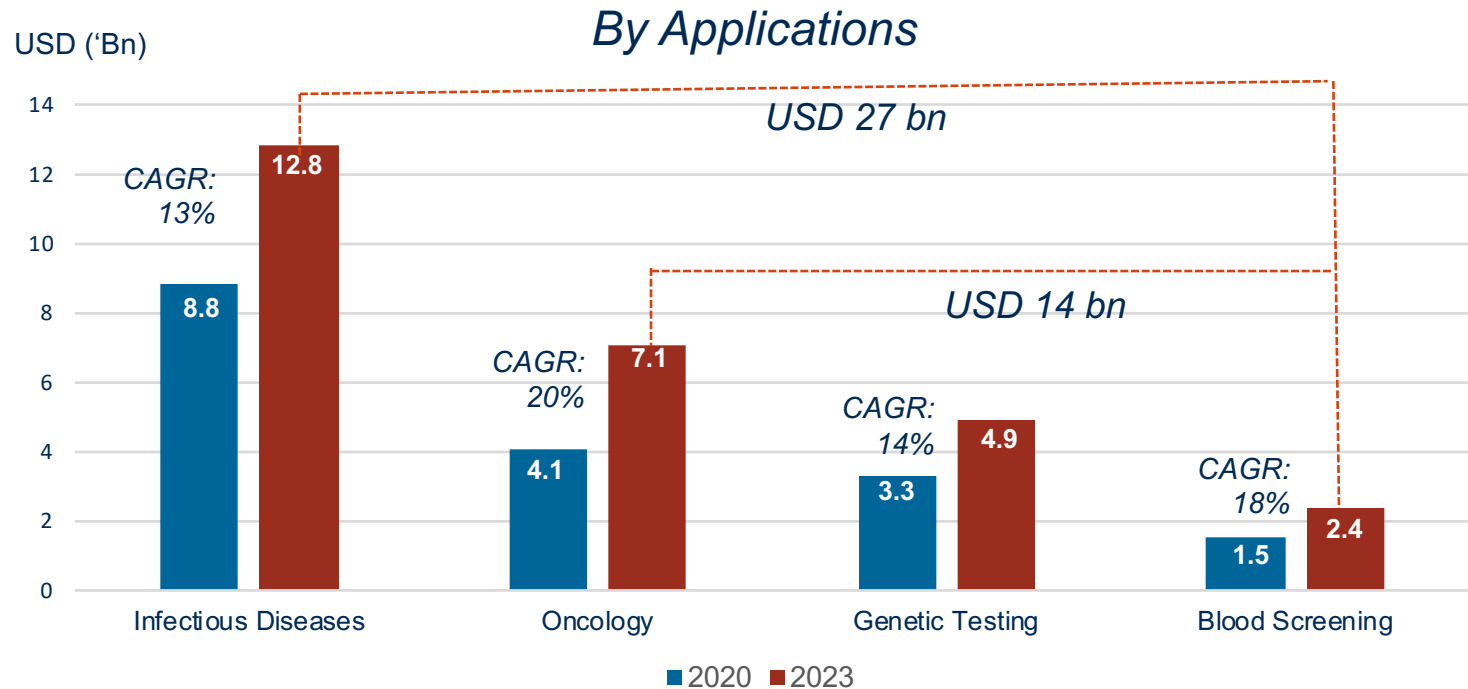
Application Development

Pathway from R&D to Commercialization



Market Opportunities

Global Molecular Diagnostics



Sources: Molecular Diagnostics Market Size, Share, Top 10 Players Trend, Revenue, Industry Analysis and Forecast 2026 | Fortune Business Insights; Markets and Markets (2023); Grandview Research (2022); Transparency Market Research (2023)

Competitive Landscape

Genomic-Mapping

(Personalized Wellness/Medicine Profile)

| Parameters | | Go Dx | Co. A | Co. B | Co. C |
|---|--|---------|-------|-------|-------|
| Personalised Health-Risk Profile | Next Generation Genomics Technologies | √ | √ | √ | |
| Additional Technique | Epigenetics & Anti-Ageing | √ | | √ | √ |
| Neural Health | Nutraceuticals/RNA mapping | √ | | | |
| Immunity Health | Nutraceuticals/RNA mapping | √ | | | |
| Accessibility | 1. Personal 2. Medical Clinics 3. In-house Lab | 1,2 & 3 | 2&3 | 1&3 | 1&2 |



Competitive Landscape

miRNA/Circulating Tumor DNA/DNA methylation

| | Parameters | Go Dx | Co. A | Co. B | Co. C |
|--------------------------|---|----------------|---------|---------|-----------|
| | Pan Cancer Panel | √ | √ | √ | |
| | Circulating Tumour DNA | √ | √ | | |
| Medical Field | miRNA | √ | | | √ |
| | DNA Methylation | √ | | √ | |
| | Biopsies | √ | √ | √ | √ |
| Diagnostic Method | 1. Minimally Invasive 2. Non-Invasive | 1&2 | 1 | 1&2 | 1 |
| Result Turnaround | miRNA | 1 hour | 3 hours | 5 hours | 2.5 hours |
| Accessibility | 1. Central Lab 2. Medical Clinics & Lab 3. In-house Lab | 2 & 3 | 1 & 3 | 1 | 2 |



GO-Dx

Advantages of Liquid Biopsy

Liquid Biopsy vs. Solid (Tissue) Biopsy

Liquid Biopsy

- Non-invasive
- Rapid & Ease of Testing
- Requires 5 ml of blood (2 ml plasma)
- Provides genomic, proteomic, & metabolomic information
- No complications

Tissue Biopsy

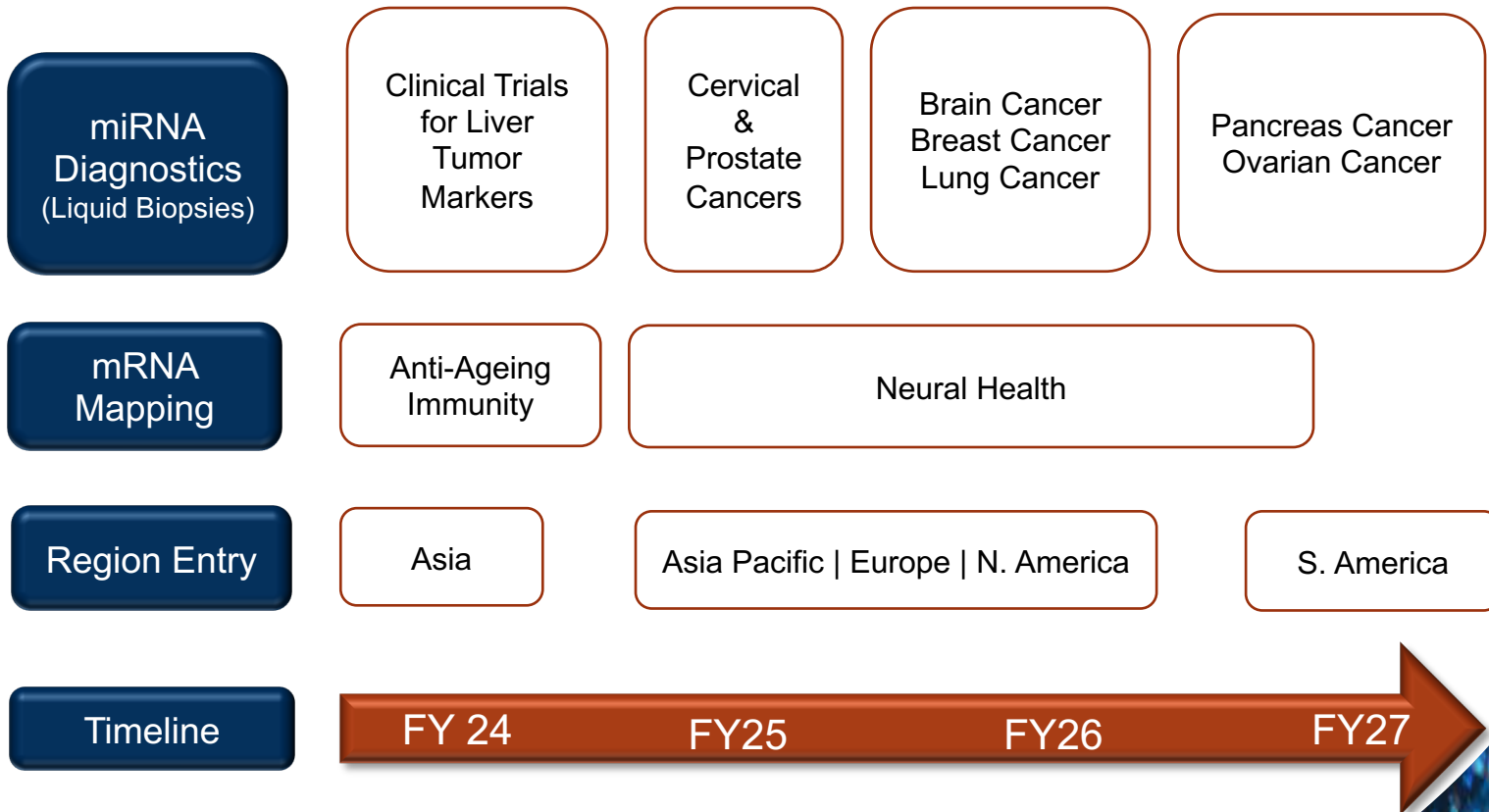
- Invasive
- Tedious Tissue Retrieval
- Requires surgery
- Provides morphological information; requires subclones
- Complications: haemorrhage, infection, puncture damage to surrounding tissue or organs



GO-Dx

Our Commercial Roadmap

Diagnostics and Screening Services



Our Key Management



Dr. Lim Kah Meng
Group Managing Director | CEO

Experienced scientist in the biotechnology and biopharmaceutical industry

Started his career as a Research Scientist in A*Star and as a Professor in NTU before venturing as an entrepreneur and advisor to several biotech companies.

Currently serving as Independent Director in a SGX listed company and Board director in several other biotech companies.

Holds Ph.D. in Biomedicine from National University of Singapore.



Danny Heng
CFO

Extensive experience as Group CFO in listed companies and private equity firms.

Proven track record in enhancing shareholders' value by improving effectiveness and efficiency of financial and management functions.

Holds B.B.A. from City University of New York, USA and M.S. (Accountancy & Info-System Management) from Pace University, New York, USA.

FCA, CPA, CA, FCARB.



Dr. Ron Tan
CSO | COO

More than 17 years experience in clinical diagnostics innovation.

Holds 2 international patents and 2 proprietary know-hows, and has 35 scientific publications internationally.

Holds Ph.D. in Biomedical Science from National University of Singapore.



Board of Directors



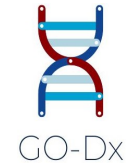
Dr. Lim Kah Meng
Group Managing Director

Scientist and experienced serial entrepreneur in the biotech & biopharma industry | Former A*Star researcher and professor in Nanyang Technology University of Singapore | Founder of GO-Dx Corporation | Board member of a Singapore listed biotech company



Matthew Leonard
Independent Director

Accomplished business professional with work experience both in Australia and Singapore | Experience in fund raising and advisory | Serving as Non-Executive Director in several public-listed companies and Executive Director of a Biotech company



Board of Directors



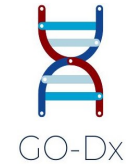
Lim Sah Soon
Director

Distinguished top civil-servant and seasoned entrepreneur | Served as Chief Liaison Officer at the Prime Minister's Office, Division Director at the Ministry of Community Development, Honorary Secretary-General of Singapore Federal Chamber of Commerce and Industry | Serving as Secretary-General of Singapore Chinese Chamber of Commerce and Industry



Justyn Stedwell
Independent Director

Experienced Company Secretary of many ASX and NSX companies across various industries | Serving as Non-Executive Director in several public-listed companies



Scientific Advisory Board



Dr Moshe Szyf

Geneticist and Professor of Pharmacology and Therapeutics at McGill University, Canada.

Currently holding a GlaxoSmithKline-CIHR Chair in Pharmacology. Main research interests lie in epigenetics, including behavioral epigenetics and cancer.

Holds Ph.D. in Genetics, Hebrew University. Post-doctoral work on DNA Methylation at Harvard School of Medicine, USA.



Dr. Poh Chit Laa

Distinguished Professor and Head of the Centre for virus and vaccine research at Sunway University, Malaysia.

Extensive collaborations with Oxford University, UK and Monash University, Australia in synthetic peptide and nano-vaccines.

Editorial Committee member of the Journal of Bioscience and Bioengineering, Japan.

Holds Ph.D. in Microbiology from Monash University, Australia



Dr. Leong Wai Fook

Senior Research Fellow in A*Star specializing in optimizing conventional chemotherapy regimens for pancreatic ductal carcinoma patients.

Extensive work in managing clinical pharmacology platform to optimize drug dosing at SingHealth Agency.

Holds Ph.D. in Virology at NUS. Post-doctoral in DNA repair at the Institute of Molecular and Cell Biology. Council Member of the Singapore Society for Microbiology and Biotechnology.

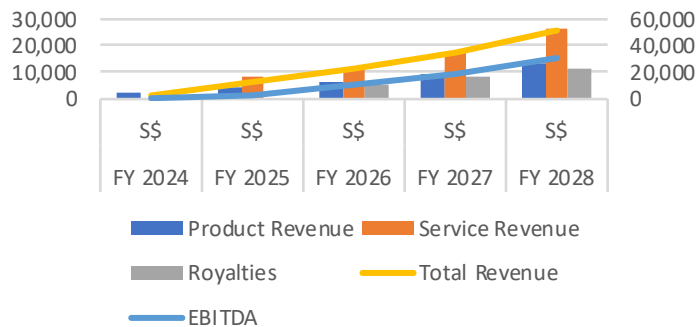


Financial Outlook

| | FY 2024 (4 months) | | FY 2025 | | FY 2026 | | FY 2027 | | FY 2028 | |
|--------------------------------------|-----------------------|-------|---------|-------|---------|-------|---------|-------|---------|-------|
| (\$\$ '000) | S\$ | % Rev | S\$ | % Rev | S\$ | % Rev | S\$ | % Rev | S\$ | % Rev |
| TOTAL REVENUE | 2,200 | | 12,030 | | 23,045 | | 35,068 | | 51,601 | |
| Product Revenue | 2,200 | 100% | 4,080 | 34% | 6,120 | 27% | 9,180 | 26% | 13,770 | 27% |
| Service Revenue | 0 | 0% | 7,950 | 66% | 11,925 | 52% | 17,888 | 51% | 26,831 | 52% |
| Revenue - Royalties | 0 | 0% | 0 | 0% | 5,000 | 22% | 8,000 | 22% | 11,000 | 21% |
| COGS | 710 | 32% | 3,016 | 25% | 4,524 | 20% | 6,786 | 20% | 10,179 | 20% |
| TOTAL GP | 1,490 | 68% | 9,014 | 75% | 18,520 | 80% | 28,281 | 80% | 41,422 | 80% |
| TOTAL OPEX | 840 | 38% | 6,192 | 52% | 7,680 | 33% | 9,266 | 26% | 10,544 | 20% |
| Organization Expense | 344 | 16% | 4,604 | 38% | 5,983 | 26% | 7,548 | 22% | 8,777 | 17% |
| Commercial Expenses | 95 | 4% | 605 | 5% | 605 | 3% | 605 | 2% | 605 | 1% |
| Tech & Development Expenses & others | 402 | 18% | 983 | 8% | 1,092 | 5% | 1,113 | 3% | 1,162 | 2% |
| EBITDA | 649 | 30% | 2,822 | 23% | 10,840 | 47% | 19,015 | 54% | 30,877 | 60% |



Go-Dx Revenue & EBITDa



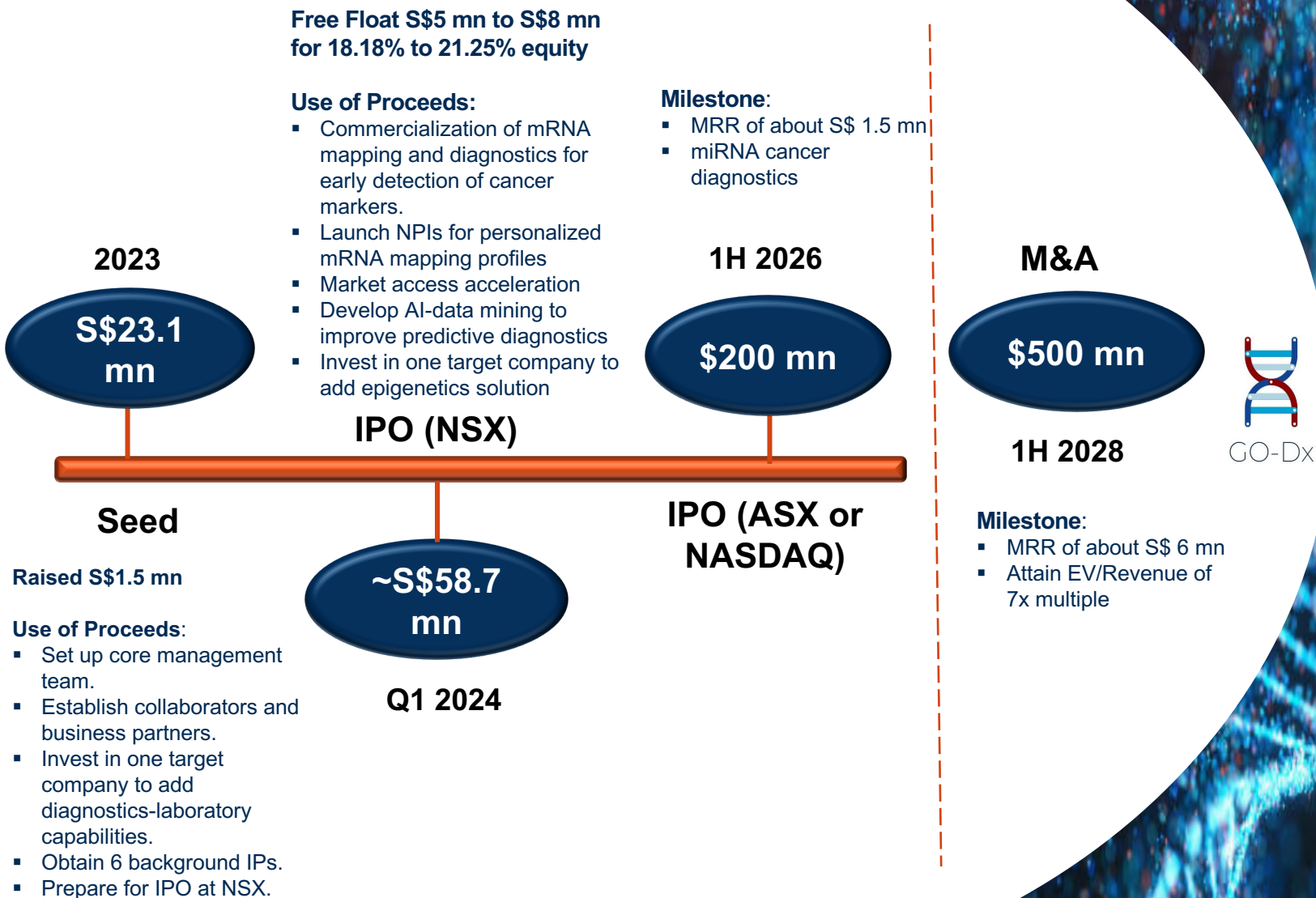
Revenue (Lab Services)

Health Risk Profile
(mRNA Mapping & Analytics)
Screening (epigenetics)

Revenue (Product/Devices)

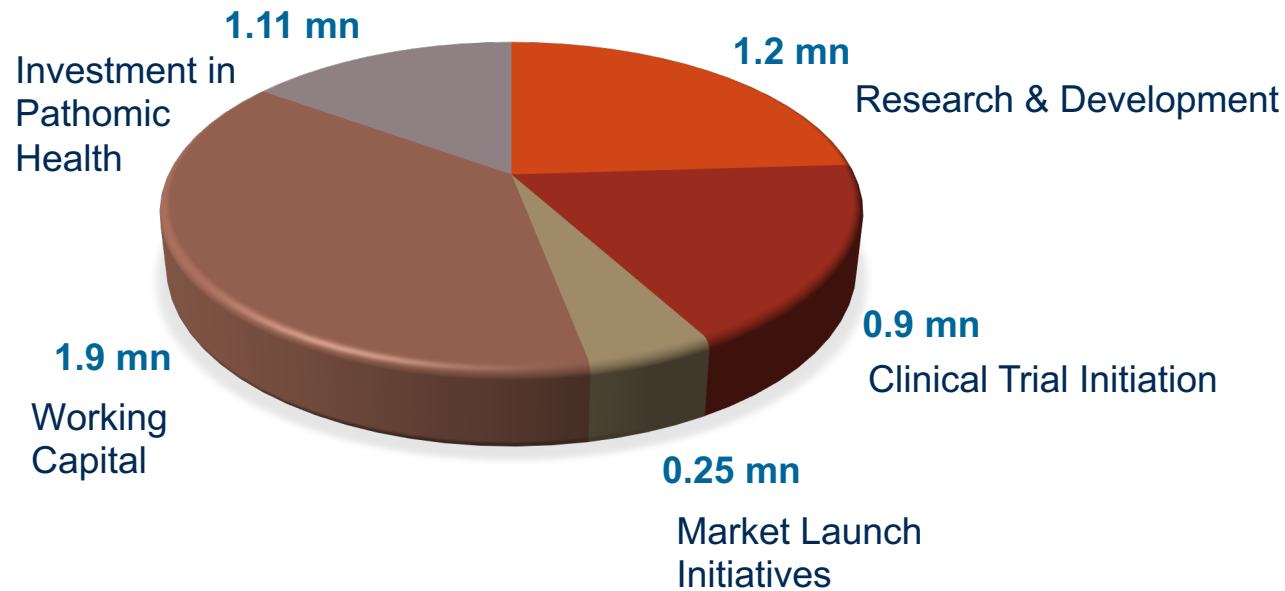
Immuno-Diagnostics
(Cancer Markers Liquid Biopsies)
Bio-Nutraceuticals
(Immunity & Brain Health)

Scaling the Business



Use of IPO Proceeds

FUND USAGE (AUD 'MILLION)



Disclaimer

This material, prepared by GO-Dx Corporation Ltd (“GO-Dx”), is based on the Company’s current opinion, assumptions and expectations, public-accessible information, information received from third parties, and provided to the recipient for discussion purpose only. It is made available by GO-Dx to a limited member of recipients on a confidential basis to specified parties solely to assist them in deciding whether to proceed with their investment consideration.

The recipient agrees that they will not circulate, copy and disclose the information contained in this material or data, analysis, results related to this material upon receiving this material. Each recipient should make an independent assessment of the merits of pursuing an investment and should consult its own professional advisors.

GO-Dx does not make any representation, warranty or guarantee of any kind, express or implied, as to the accuracy, completeness, or reasonableness of the information contained herein and, hereby expressly disclaims any and all liability based on or arising from, in whole or in part, such information, errors therein or omissions therefrom.

The receipt of this document by any recipient is not to be taken as constituting the receipt of investment advice or an establishment of customer or client relationship.

